

~~Hate~~ Report
it Wales

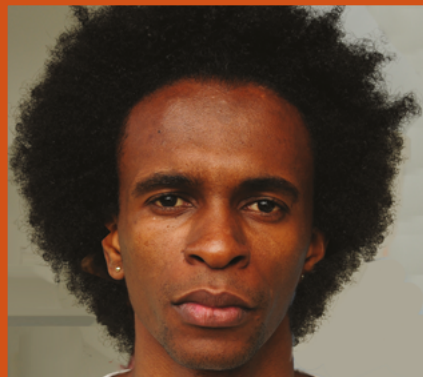
See it
Hear it
Report it

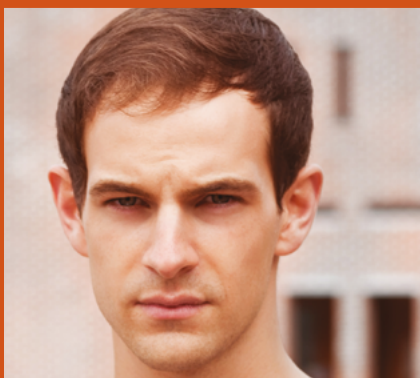
Hate crime
together we can stop it

**victim
support**
find the strength



Ariennir gan
Lywodraeth Cymru
Funded by
Welsh Government





So, what is a Hate Incident or Hate Crime?

A crime or incident committed because of who you are or who someone thinks you are.

Quite simply, if because of your age, disability, sexuality, religion, ethnicity, gender (including gender identity) or lifestyle choice (e.g. Goth) someone or a group of people targets you, commit a crime against you, bullies you or harasses you, then this is a hate crime or hate incident.

This may include:

- Verbal abuse
- Offensive graffiti
- Threatening behaviour
- Damage to property
- Assault
- Cyber bullying
- Abusive texts, emails or phone calls
- Taking money from you.

Why is it so important to report a hate crime or hate incident?

Hate incidents and hate crimes are under-reported. We need to understand the problem so that the right decisions can be made to stop YOU or a member of YOUR family and friends from becoming the next victim.

Without knowing that these issues are taking place, we can't stop them happening to you or someone else.

Reporting these issues helps us and other organisations track the extent of the problem in YOUR local area and do the right things to make YOUR community safer, a better place to live and make sure the right support is available.

The right support means we can stop victims feeling isolated, depressed, frightened, distressed or even worse taking their own life.

Hate crime
together we can stop it

What is the project all about, what support is there and who can I contact?

Victim Support has been funded by the Welsh Government to increase the reporting of hate crimes and hate incidents across Wales and to offer support to victims of these offences.

Working with other organisations such as the Police, Victim Support can be pro-actively preventing further hate offences through local and national targeted interventions.

If Victim Support are aware of these issues early, we can get the right support in place at the right time to stop the harm these offenses cause from escalating. So, if you are a victim or a witness, then by reporting to Victim Support you help us to help others.

Support is tailored to the needs of each victim which may include:

- Emotional Support
- Practical Support
- Advocacy or
- Restorative Justice.

We can also provide you with assistance in reporting a crime to the Police and in attending court, but there is no pressure to do this.

Even if you do not need support yourself, it is still important for us to know what offences are taking place and where.

Call the Police directly by dialling **999** if you are in immediate danger, or **101** for non-emergencies.

Ring **0300 30 31 982 (FREE 24/7)** to contact Victim Support directly. Calls are treated confidentially and you have the option to remain anonymous.

You can also report online at www.reporthate.victimsupport.org.uk

Victim Support is the independent charity for victims and witnesses of crime in England and Wales. We were set up 40 years ago and have grown to become the oldest and largest victims' organisation in the world.