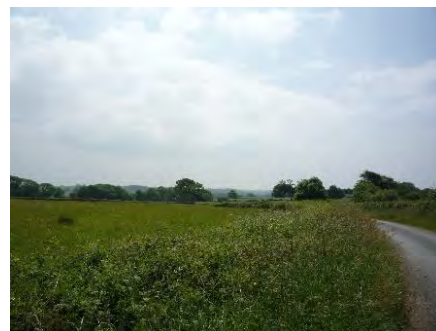

LANDSCAPE CHARACTER AREA 11: WESTERN CLEDDAU

Location :

This LCA is located to the east of Haverfordwest and is bordered by the A40 to the north and the Pembrokeshire Coast National Park to the south. Relatively small in area, it contains the Western Cleddau river which flows south out of Haverfordwest, a small part of Uzmaston village and individual farmsteads set within agricultural land.



View along Church Hill Lane to the south west



View along the river bank into Haverfordwest at the railway and Freemans Way crossing.



View from south of Arnolds Hill towards Haverfordwest

Summary Description :

This LCA generally comprises an agricultural and woodland mosaic with clusters of mixed woodland and fields with mature trees in tall hedgerows. Scattered farmsteads are located throughout the area and views into the Daugleddau estuary are possible. The Western Cleddau

as it leaves Haverfordwest and flows into the Daugleddau sits within the western boundary and forms part of the wider area of estuarine river and associated riparian areas and inlets of the Daugleddau.

Key Characteristics

- The underlying geology is dominated by Silurian mudrock forming a gently undulating landform rising up to a ridgeline that the A40 follows. The Western Cleddau and the Merlin Brook, the upper reaches of the 'ria' or drowned river valley forming the Milford Haven Waterway.
- The settlement pattern consists of small hamlets, scattered farmsteads with associated farm buildings, isolated dwellings, including gentry houses and an absence of settlements, set within a fieldscape of regular and irregular enclosure.
- This landscape comprises an agricultural and woodland mosaic of pasture and crops in large irregular fields bounded by hedgerows with mature trees. Brooks and streams cross the area and traditional stone bridges contribute to its character.
- Key views south across the river into woodland mosaic and rolling lowlands.
- Whilst the A40 moves east west along the northern boundary, narrow lanes cross the area and provide access to farm tracks.
- There are few ancient monuments recorded within the area although the eastern area lies within the Landscape of Outstanding Historic Interest of the Milford Haven Waterway.
- Forming part of a wider area of English speaking communities below the Landsker line.

Key Qualities

There is a sense of tranquillity as land falls away to the south of the A40 which forms the northern boundary of much of this landscape character area. It remains strongly associated with the Daugleddau to the south where the riparian habitat and tidal flowing water introduce a sense of connection and space. Overall its character is agricultural rather than riparian with the absence of large settlements; stone bridges help to maintain a sense of enduring rural character. Deciduous tree lined narrow lanes provide a canopy when in leaf and provide a sense of seclusion with limited views into the wider landscape.

Landscape Change (LCA Specific)

Past and Present

- Large modern agricultural buildings constructed of steel frame, blocks and metal sheeting sit alongside traditional agricultural buildings within large farmsteads.
- Traditional stone bridges crossing streams and brooks are retained.
- Trees have been retained within hedgerows providing landscape character and habitat.
- Hedgerow maintenance is largely appropriate.
- Recreational walk and trim trail have been introduced along the riverside near Haverfordwest.
- Absence of light pollution and intrusive development.



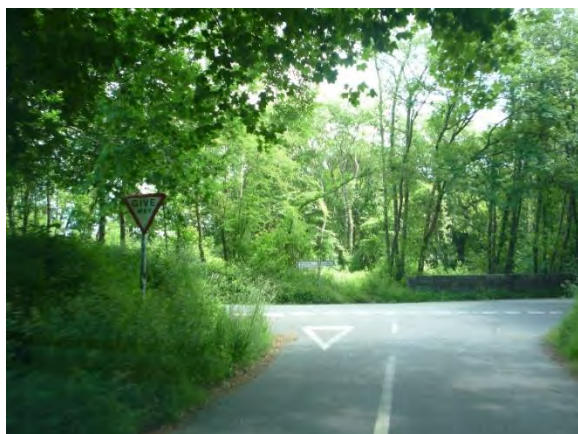
Recreational area beside the river at Haverfordwest



traditional farm buildings at Arnolds Hill

Future

- Potential for mismanagement of woodland and field boundaries.
- Intensification of farming may lead to pressures for large scale farm buildings inappropriate to this landscape and loss of field boundaries.
- Climate change and intensification of farming leading to additional pollution risk to the river.



Tree lined roads and stone bridge at the eastern edge



Regular hedgerow management and retained trees

Key Sensitivities

- Intricate mosaic of fields, wetland and woodland parcels.
- Recreational area and wider landscape attach intimately to the southern edge of Haverfordwest.
- Existing small scale built development pattern, sympathetic within the rural character
- Rolling slopes containing the waterway and peaceful estuarine environment.

Guidelines to Protect / Conserve / Enhance

- Retention of Slebech Church as landmark feature
- Restrict expansion of the urban fringe of Haverfordwest into recreational areas
- Retain traditional stone bridges and ensure any repairs are made with traditional materials and skills
- Resist the introduction of large scale and vertical structures to the area
- Appropriate re-use of traditional agricultural buildings which are no longer in use for their original purpose.
- Retain the existing regular and irregular field scape
- Potential for increased recreational access to the riverside
- Ensure peaceful qualities of estuarine environment are protected, particularly from unsympathetic development, light and noise pollution.
-



Isolated dwelling within the area



The A40 along the northern border .



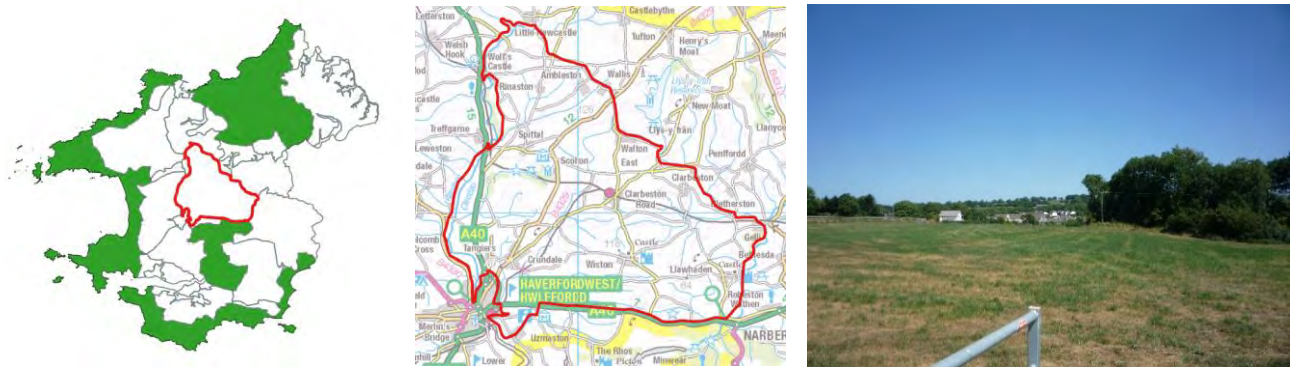
High quality views across the tidal river onto the floodplain beyond.

Adjacent Authority LCAs
PCNPA : LCA28 Daugleddau SCA 33 Daugleddau

LANDSCAPE CHARACTER AREA 12: LANDSKER LOWLANDS

Location :

This LCA is centrally located and directly north east of Haverfordwest. It is bordered by the A40 to the south and generally runs along it at the west. Llawhaden, Wiston, Clarbeston Road, Walton East, Spittal, Crundale and Ambleston villages lie within it. Transport links within the area include Haverfordwest airport the railway line to the west of the county. Scolton Manor Country Park is located within this area.



View into the southern edge of Clarbeston Road from the south



View north from the A40 near Arnolds Hill



Field gate view north east from near Spittal

Summary Description :

This LCA generally comprises village and hamlet settlements within a rolling lowland mosaic of large open and smaller pasture and arable fields with mature trees within hedgerow boundaries. Small scale wooded valleys, including conifer plantations are interspersed with occasional farmsteads and dwellings. Haverfordwest Airport, the A40 and railway corridors provide strategic transport links. A dense network of narrow roads and lanes criss-cross. Numerous streams and brooks feed into the Eastern or Western Cleddau, including Spittal, Cartlett, Millin and Fenton Brooks and Rudbaxton Water.

Key Characteristics

- The underlying geology is varied, and reflected in the terrain of valley systems, gentle platforms and dissected vales. It is dominated by Ordovician and Silurian slates and sandstones which underlie the lowland hill terrain, with alluvial and glacial deposits forming part of the lowland flood plain system.
- Largely agricultural, the landscape contains a mosaic of large open and medium fields which typically have mature trees in hedgerow boundaries. Some areas contain clusters of small scale wooded riparian valleys and the area is interspersed with occasional scattered farmsteads and small villages linked by lanes. The relatively 'enclosed' character of much of the landscape results from high levels of mature hedgerow and woodland.
- Improved grassland and arable dominate with small areas of broadleaf and coniferous woodland and scrub, linear areas of semi-natural broadleaf woodland fringe river valleys with significant associated grassland habitats.
- Stone bridges, including Llawhaden add to the character and allow vistas along river valleys
- The historic landscape is rich and diverse and a very large number of archaeological sites, from all periods are present, including a Roman road, bronze age round barrows, iron age defended enclosures, medieval earthwork castles, 19th and 20th century farm buildings and gentry houses.
- Infrastructure is dominated by the A40 and the trunk road network, however the railway line and Haverfordwest airport are also influential.
- Cultural influences are significant and the Landsker Line represents the line of Norman castles built to protect English speaking communities established in the south, and still recognised as a local cultural influence.

Key Qualities

There is a strong sense of tranquillity away from the A40 (and adjacent airport) and railway line. The rolling lowland pastoral and arable landscape with managed hedgerows, mature trees and small areas of woodland, combine with historic sites and settlements to produce a verdant, rich and long settled character. Settlements are relatively small and nucleated. Historically, English speaking communities were divided from the northern Welsh speakers by the 'Landsker Line' of defensible Norman castles including Llawhaden and Wiston and this formerly strong cultural influence remains as a remnant association. From higher ground significant views out of the area including those to the north, take in the sweep of the Preseli Hills, Roch Castle to the east, Bluestone and Canaston Woods to the South and the National Park beyond.

Landscape Change (LCA Specific)

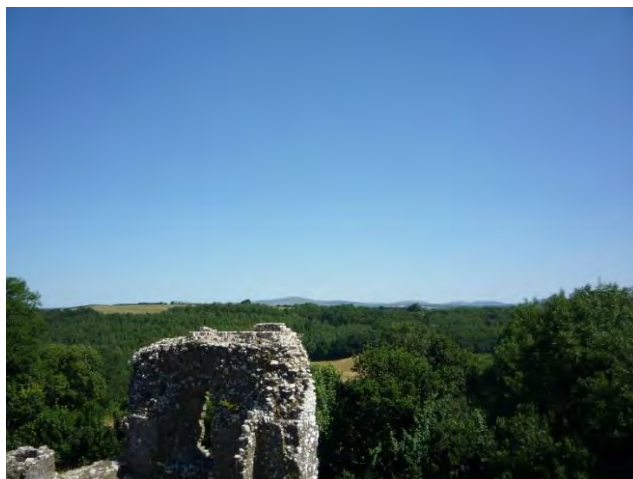
Past and Present

- The introduction of large scale renewable energy developments, including solar farms has been limited to the north and east of Haverfordwest and generally well contained.

- Conversion of traditional farm buildings to residential or holiday accommodation has taken place and the introduction of large scale farm buildings to support modern agricultural practices continues.
- Areas of conifer plantation particularly along the A40 have been introduced.
- Settlements are well contained and generally maintain well defined edges.
- Historic buildings and sites punctuate the area.
- Light pollution can spill from Haverfordwest edge into the area, particularly from commercial, sport and school developments.



Modern large agricultural buildings near Wiston



Conifer plantations north of Llawhaden castle are a modern influences on the landscape.

Future

- Continued modernisation and upscaling of agricultural buildings and resultant impact on local character
- Felling of coniferous woodland blocks and potential for the re-use of land
- Continuing and increased pressure for renewable energy developments
- Potential for expansion of settlements and incursion into the open countryside



Well defined settlement edge of Clarbeston Road



solar energy park near Wiston is well contained within the landscape

Key Sensitivities

- Impact on historic and medieval townscape patterns including areas of medieval strip fields which remain, including at Ambleston and Crundale.
- Impact of further intensification of agricultural practice on the character of agricultural buildings within the landscape, field patterns and boundaries.
- Potential impact of cumulative renewable energy developments
- Eastern areas are vulnerable to further light pollution.
- Poorly defined settlement edges as settlements accommodate new development

Guidelines to Protect / Conserve / Enhance

- Hedgerow and agricultural management which supports conservation and enhancement of habitat
- Conservation of the historic and archaeological environment, and where appropriate improved public access and information about cultural associations.
- Replanting of existing coniferous plantations with native broadleaf species or opening up of the plantations to improve biodiversity and recreational value.
- Future built development which enhances settlement character and well defined urban edges



Llawhaden castle is part of the Landsker line of historic fortifications



St Catherine's bridge across the Western Cleddau



Canopied bridleway provides biodiversity and recreational opportunities.

Adjacent Authority LCAs
PCNPA : LCA28 Daugleddau
Seascape Character Area 33 Daugleddau

LANDSCAPE CHARACTER AREA 13: ST DOGMAELS

Location :

This area is located at the far north eastern edge of the County between the National Park and Ceredigion.



St Dogmaels at the waterfront



View across the area into the National Park near St Dogmaels



View west from near Lantood

Summary Description :

This area generally comprises a rolling lowland agricultural landscape with a variety of large and small scale regular and irregular fields with hedgebank and hedgerow boundaries of varied management, and the western shoreline of the River Teifi. Built development comprises scattered farmsteads and occasional isolated dwellings, with the generally linear settlement of St Dogmaels forming the only village.

Key Characteristics

- The geology is dominated by past glacial and fluvio-glacial processes and deposited sand gravel and boulder clay / hill deposits. Ordovician slaty mudrocks also exist with significant areas of glacial deposits overlying them.
- St Dogmaels village is a traditional linear settlement with some recent modern housing located near the bend of the River Teifi. The use of modern materials provides a contrast with traditional stone built buildings of the village.
- The agricultural landscape of rolling farmland contains scattered farmsteads and limited numbers of isolated dwellings. The field scape is made up of large and small regular and irregular fields bounded by hedgerow and hedgebank boundaries with trees within managed hedges with gorse and narrow bands of trees and scrub along stream corridors.
- Where this character area extends into the low lying saltmarsh and dunes adjacent to the intertidal estuary, maritime influences at the transition between sea and dry land, forms part of a wild exposed and transient coastal seascape.
- The historic landscape of Pen Isaf Dyffryn Teifi is located at the north of the area. St Dogmaels is focused on the ruins of the Medieval Abbey and numerous listed buildings within the town along with the 19th century parish church forming the core of the Conservation Area. Within the wider area significant archaeological elements include a prehistoric round barrow and baptismal pool.
- Cultural landscape retains a strong sense of place and is formed by the village of St Dogmaels and its Abbey, and the surrounding countryside. It retains a high incidence of Welsh speakers and local cultural traditions.
- Habitats are dominated by improved grassland with low levels or arable to the south of the area, small areas of broadleaved and coniferous woodland, scrub and bracken which add interest to the improved grassland.

Key Qualities

The estuary location of St Dogmaels gives the area a strong sense of place. The sight and sounds, including birdlife, and smells of the estuary and river corridor invoke a sense of maritime recreation, calm and tranquillity. Attractive views both into and out of the area, the estuarine landscape to the east and the rural backdrop evoke a strong sense of place and exposure re-enforced by the windblown trees and gorse at higher ground. The historic settlement of St Dogmaels and its ruined Abbey provide a link to the past and evoke a sense of the long settled, as do views out onto Cardigan.

Landscape Change (LCA Specific)

Past and Present

- Management of agricultural fields and associated boundaries is varied and gaps and post and wire fencing have appeared.
- St Dogmaels village has evolved along the waterfront and retains the woodland backdrop to form an attractive woodland setting
- Designation as a Conservation Area at St Dogmaels has sought to enhance and preserve the built environment
- The landscape has little modern development to the north of Glanrhyd and little intrusion to hinder visibility over largely surviving landscape elements



View into St Dogmaels from the south



St Dogmaels at the water's edge

Future

- Potential for flooding of low lying coastal areas
- Potential for light pollution which could spill into the countryside and water environment.



St Dogmaels Abbey



View out of the area onto shoreline caravan site

Key Sensitivities

- The historic environment evidenced through designation as a Conservation Area, listed buildings, SAMs and at least partly included within the Lower Teifi Valley Landscape of Special Historic Interest
- The rural landscape pattern largely survives intact and could be eroded by insensitive modern development

Guidelines to Protect / Conserve / Enhance

- Conserve the archaeological significance of St Dogmaels Abbey and seek to support its tourism potential and interpretation.
- Maintain and conserve traditional field boundaries.
- Seek to maintain the self-contained nature of the built environment at St Dogmaels.
- Retain settlement pattern and appearance of traditional buildings and conserve historic landscape elements.



Mixed hedgerow management



Wooded lane



Rural building

Adjacent Authority LCAs
PCNPA : LCA25 Cemeas Head
SCA1 : Teifi Estuary

LANDSCAPE CHARACTER AREA 14: AFON CYCH & AFON TAF WOODED VALLEYS

Location :

This area is located at north east Pembrokeshire and borders both Ceredigion and Carmarthenshire.



Afon Cych valley floor



Close view of typical valley floor



Wooded valley in the wider landscape at Cwm Ffrws

Summary Description :

This area generally comprises narrow wooded lowland valleys, with dense stands of mixed woodland and fast flowing streams along the valley bottoms. Connected by areas of wet rough grazing and deciduous broadleaf woodland which allow borrowed views onto adjacent rolling farmland. There is a general absence of settlement within the narrow valleys, although farmsteads and groups of farm buildings are located within the narrow bands of agricultural land, along with Llanfrynach, Glandwr and Cilgerran. Cilgerran Wildlife Centre is partly located within the area.

Key Characteristics

- Underlying geology within the valley areas is formed by glacial and fluvio glacial deposits, meltwater channels and incised tributary valleys. Areas of flood plain with bedrock formed by underlying Ordovician slate which has been quarried in places but is now derelict.
- Predominantly consisting of sinuous, relatively narrow wooded valleys of mixed age broadleaf woodland and streams forming the headwaters to the Afon Teifi, Afon Taf and Afon Gafel. Small areas of hedged and hedgebank bounded regular fields, interspersed with wet rough grazing in areas, sit within valley bottoms or atop.
- Partly within the historic landscape of the Lower Teifi Valley, whilst the wider area is rich in prehistoric and medieval and post medieval records including Registered Parks and Gardens, Listed Buildings, and Scheduled Monuments, limited records are within the area and largely medieval.
- The settlement pattern consists of a limited number of settlements, farmsteads and some isolated dwellings. Limited new construction has taken place and mirrors traditional materials in domestic dwellings whilst new farm buildings tend to be steel framed and covered in steel or timber sheeting.
- Built settlements, including Cilgerran are distinct. Its historic castle is prominent above the steep valley, with generally sympathetic materials used for modern development.
- Cultural influences include Welsh language and traditional building materials and settlement character, the Welsh language and cultural heritage remain strong.
- Habitats comprise linear, mainly broadleaved woodland along watercourses and likely to support commoner Local Biodiversity Action Plan species and potentially species identified within the Special Area of Conservation citation. Areas of improved grassland include arable and grazing.
- The area is traversed by a network of minor roads and tracks with an absence of main roads.

Key Qualities

Narrow contained wooded valleys with dense mixed woodland result in a sheltered, tranquil and peaceful setting, disturbed only by the presence of fast flowing streams which contribute significantly to the sense of place and local soundscape. In places, borrowed views of the Preseli Hills and views into the area from surrounding rolling agricultural landscape provide a typical Pembrokeshire upland landscape. The low levels of development and sense of enclosure contribute to the feeling of remoteness evoked. Light pollution from settlements outside the area, including Crymych impacts locally. Historic buildings provide a strong sense of place and history.

Landscape Change (LCA Specific)

Past and Present

- Agricultural management varies markedly in quality, and woodland management can impact on local views
- Former small quarry areas are generally naturalised.



Conifer clearance



Views across the area

Future

- Development pressures to extend existing settlements may result in non-traditional settlement patterns
- Pressures for agricultural intensification may erode wooded areas, and introduce pressures for amalgamation of holdings and larger agricultural buildings.
- The continued natural regeneration of former quarries



Cilgerran castle



Wooded entrance to village

Key Sensitivities

- Loss or degradation of broadleaf woodland
- Changes to the existing field pattern
- Introduction of inappropriately scaled vertical structures within the landscape
- Potential impact on Welsh language communities

Guidelines to Protect / Conserve / Enhance

- Ensure longer term woodland management is appropriate, including insitu retention of fallen wood, the encouragement of deciduous species (replacement of coniferous) and age mix along with the open riparian zone.
- Future built development should continue to contribute to traditional character of both new build and renovation.



Street name



*Traditional fronted property
Cilgerran*



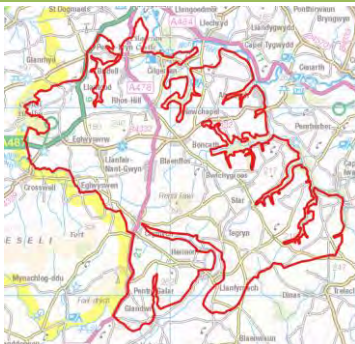
Fallen wood insitu

Adjacent Authority LCAs
PCNPA : none Ceredigion County Carmarthenshire County Council Special Landscape Areas: Teifi Valley

LANDSCAPE CHARACTER AREA 15: BONCATH

Location :

This area is located at north east Pembrokeshire and borders both Ceredigion and Carmarthenshire in places.



View west to Frenni Fawr



View southwest from near Bwlch y Groes



View east towards Cilgerran

Summary Description :

This area generally comprises rolling upland farmland with a few areas of grazed moorland on more exposed hilltops. There are occasional small areas of linear woodlands along narrow valley bottoms with streams feeding into the Afon Taf, and few conifer plantations on hill slopes. Settlements are more often linear in character than elsewhere in Pembrokeshire and retain a strong Welsh language cultural tradition.

It contains the settlements of Crymych, Boncath, Eglwysrwrw, Hermon, Tegryn, Newchapel and part of Abercych and well as a wide range of small villages and hamlets.

Key Characteristics

- Geology is dominated by Ordovician slates and sandstones forming the lower slopes of the Preseli Hills to the north-east. The terrain is undulating, rounded domed hills and incised by valleys along the northern and eastern margins of the area, developing deep cwms to the south east. Narrow flood plain / drift fill also located within the area along with the upper part of the Afon Nyfer system. Likely to be underlain by glacial deposits and infilled bases of adjacent steep valley sides.
- Upland area of rolling farmland with areas of grazing having a moorland / heathland character on more exposed hilltops, including Frenni Fach and Frenni Fawr, with its conifer plantation, and lower slopes enclosed for agriculture and scattered farmsteads.
- Culturally, the area retains a locally significant Welsh speaking culture and was the location for social unrest of the 19th century tithe wars. Both rural settlements are former industrial communities including Glog, and Hermon with Crymych becoming the focus for Welsh language cultural activity during the 20th century. The Teifi Valley is also noted for the survival of the Welsh language and for its historic settlement.
- Habitats across the area vary and whilst there are areas which are predominantly improved grassland comprising fields and field boundaries, there are areas of arable farming and linear broadleaved woodland, with areas of acid grassland and dry heath present. There are likely to be commoner LBAP species and potential for important species at the SAC designation at the northern margin of the area.
- Settlements are linear in character at their historic core than elsewhere in Pembrokeshire, and where elevated can give a sense of exposure although more recent development has disrupted the overall form and integrity, although materials of rendered walls and roof tiles generally reflect the more traditional character of the area.
- Significant archaeological elements include prehistoric funerary and ritual monuments, post medieval structures and sites, and part of the parks and gardens associated with the gentry mansions at Ffynone and Cilwendeg. Post medieval quarries and a range of listed buildings are also present.
- The A478 passes north south through the area and traffic dominates locally.

Key Qualities

Views to the Preseli Hills to the west and views out over farmland and to the coast to the northwest in the wider landscape give this area a sense of place and expanse. The Preseli Hills are locally considered as mountains with strong cultural traditions. The moorland and exposed rock on summits add to the attractive quality. Upland areas can evoke a sense of remoteness and exposure reinforced by wind swept low growing trees.

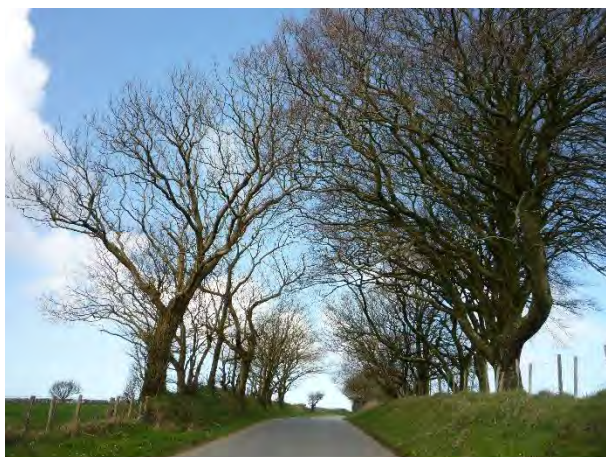
To the west, an expansive rolling landscape, with views out to the Preseli's, regarded locally as mountains, provides a strong sense of place and interrelationship with adjacent areas, including the incised valleys of Afon Cych and Afon Taf, which cut through the landscape. High ground can include moorland and exposed rock which adds to the variety and attractiveness of the rural landscapes. Traditional settlements can be secluded within the folds of the landscape or sit prominently as linear developments along shallow ridges.

There is a sense of tranquillity away from busy main roads, and wind turbines whilst visible across the landscape do not overwhelm.

Landscape Change (LCA Specific)

Past and Present

- There is an increasing presence of modern agricultural buildings associated with the individual farm units which are out of scale and character with the area and provide an increasing detractive element within the landscape.
- The mixed farmland landscape evidences a wide range of management regimes and quality
- Post and wire fences, particularly to re-enforce hedge boundaries are exposed as hedged become patchy and poorly managed.
- Modern domestic developments have tended to replicate traditional form and scale and materials for walls and roofing complementary to traditional methods.
- The area contains a significant level of recent unsympathetic development such as breeze block/ metal sheeting used in retail buildings and modern brick built housing estates, although stone and render featuring in new buildings and extensions.
- Warehouses and retail developments are visually out of keeping with the character of the area near Crymyh.
- One planet developments have fragmented the traditional agricultural landscape.



Trees framing a country lane



Tall hedgebank

Future

- Pressures for new conifer plantations and agricultural intensification could erode upland grazing character, and result in the loss of field boundaries particularly hedges and hedgebanks.
- Pressure for the further introduction of large scale agricultural buildings.
- Increased informal recreational pressures.



Wind turbine



Linear village of Tegryn

Key Sensitivities

- Field boundaries, woodlands, heathland and moorland help to define local character and should be retained.
- Interrelationship of settlements to the wider landscape and particularly built form and settlement boundary treatments.
- Historic core of settlements are at risk of inappropriate development using modern and unsympathetic materials.
- Loss and dilution of Welsh language and cultural traditions.

Guidelines to Protect / Conserve / Enhance

- Potential to enhance the character of farm buildings.
- Conserve the heathland and moorland character of the upper parts of Mynydd Preseli, whilst integrating tourism management.
- Ensure development respects local vernacular design
- Ensure development is of a scale and location to protect and promote Welsh language culture.
- Restrict fragmentation and introduction of buildings within the landscape where they would impact negatively.



Historic and modern field elements



Traditional farm buildings



Compact farmstead

PCNPA : LCA25 Cemaes Head; LCA26 Cwm Gwaun/ Afon Nyler; LCA27 Mynydd Preseli

LANDSCAPE CHARACTER AREA 16: SOUTHERN HAVEN DEVELOPED

Location :

This LCA is located at the southern shore of the Milford Haven Waterway and formed by the towns of Pembroke Dock at the water's edge and Pembroke town further inland to the south.



*Pembroke Castle from
Northgate street*



Pembroke Dock from Hobbs Point



Pembroke from St Daniels Hill to the south of the town

Summary Description :

This LCA comprises the town of Pembroke Dock which contains modern development including retail and light industry as well as traditional Georgian buildings particularly within the core of the town which is set out in a planned grid pattern, and former Royal Dockyard to the west. The town developed to support the ship building role of the Royal Dockyard and formal naval influences are still evident in the town's grid pattern and historic dockyard. The Pembroke Ferry operates from the Dockyard.

Pembroke town is functionally linked with Pembroke Dock, and has significant historic interest. Pembroke's reconstructed Castle and its medieval town walls enclosing narrow burgage plots sit along a limestone ridge. Main Street runs along its length. The prosperity of Pembroke has risen and waned over time. However, during the 19th and 20th centuries Pembroke extended into earlier settlements including Monkton. Pembroke acts as a service and market centre for the surrounding agricultural areas.

Pembroke Dock and Pembroke continue to have complementary roles, functions and strong interrelationship which justifies a single character area.

Key Characteristics

- Underlying geology is largely formed by carboniferous limestone, including the lowland ridge at Pembroke. Much of the area is overlain by the urban and industrial development and few natural geological features remain.
- Undulating lowland hill terrain provides the largely agricultural context[outside the area] for the built development of the towns whilst the settlement pattern consists of the two physically separate towns of Pembroke and Pembroke Dock, with complementary roles underpinning their relationship.
- Large areas of development within their historic cores is traditional in nature however at the edge of settlements, development is less appropriate with modern residential buildings which are not sympathetic to traditional character in evidence.
- Traditional terraces of stone cottages, Victorian and Georgian town houses with render and painted pastel, whilst having lost original features in places, provide a strong sense of overall historic character in both towns, although at Pembroke the fronts hide older buildings in many cases.
- Significant numbers of Listed Buildings, Conservation Areas at both Pembroke and Pembroke Dock and Scheduled Monuments, including Pembroke Castle.
- The sense of place is reinforced by views both towards Milford Haven for Pembroke Dock and to and from the Castle at Pembroke, which provides a clear focal point.
- The loss of industrial processes has reduced the formerly strong cultural influence, and as new cultural influences emerge, including new opportunities for the Dockyard and port activity the cultural context is evolving.
- The road pattern is dominated by the trunk road network with the A477 providing access into the Ferry port at Pembroke Dock and across the Cleddau Bridge to Haverfordwest and the north of the county. Main routes to the east and south of the county pass through Pembroke and bring traffic into the historic town centre.

Key Qualities

The historic development of these towns has been shaped by buildings, formal layouts, activity, industry and people. Whilst they differ considerably in terms of physical form and origin, the interrelationship which emerged with the development of Pembroke Dockyard in the 18th century remains strong and helps shape their modern cultural roles. Both towns retain a significant historic heritage with many fine listed buildings, scheduled monuments and conservation areas. Both exposed stone construction and painted render in pastels serve to define character and sense of place as do open spaces and their relationships with the Milford Haven waterway. Traffic is a significant issue along thoroughfares in the towns. Heavy volumes of traffic detract from any sense of tranquillity along these routes and generate local noise, air pollution (Main Street is an Air Quality Management Area) and disturbance. Views into the towns (across Milford Haven Waterway for Pembroke Dock) and into and from Pembroke Castle, help to reinforce a sense of place as do the sights and sounds of the water and industry.

Landscape Change (LCA Specific)

Past and Present

- Development at the edge of the towns has expanded away from historic cores and has not been in-keeping with character, and is generally less attractive than the historic cores.
- A trend of declining condition of both historic and modern developed areas, reflecting the current economic climate despite previous investment in the public and private realm.
- Modern commercial and industrial development contributes to high levels of light pollution.
- Close association of the water environment with the historic development of the towns, including wharfs, warehousing and for Pembroke Dock, shipbuilding yards has evolved towards functional access for the ferry port at Pembroke Dock and recreational value at the Pembroke Mill Ponds.
- Pembroke features strongly as a tourism destination, and is reflected in the range of shops, cafes and accommodation within the town. Pembroke Dock provides for the general retailing needs of south west Pembrokeshire but has suffered from high levels of vacancies in recent years.
- Traffic and transport impacts have introduced amenity and pollution issues along key routes.



Modern development at the edge of Pembroke



Vacant property at Dimond Street Pembroke Dock

Future

- Future built development has the potential to undermine the historic character of these towns, including at key gateways and edge of town locations where care is required to preserve the setting of key buildings and areas including Pembroke Castle.
- Potential for further development which reduces the separation between Pembroke and Pembroke Dock would impact upon the identities of the towns and contribute to urban sprawl.
- Potential to sensitively exploit the recreational value of the water environment.
- Any future development at the urban edge, and adjacent to surrounding farmland should be of sympathetic design.
- Restoration projects and exploitation of historic assets could increase the tourism potential and interlinkages between Pembroke Dock and Pembroke.
- Low lying areas will remain at risk of flooding.
- Protection and enhancement of Green Infrastructure and the spatial relationship between spaces to help maintain nature conservation and urban character.



Main Street Pembroke is heavily trafficked



Dimond Street Pembroke Dock is part of the town grid pattern

Key Sensitivities

- Loss of historic elements of the built environment and impact on the setting of historic buildings.
- Inappropriate development at the urban edge, and its impact on the character and relationship of the towns.
- Loss of open space and green infrastructure and resultant impact on communities, opportunities for biodiversity and attractiveness.
- Loss of economic and commercial activity within the towns.
- Increase in commercial and industrial light pollution and its impact.

Guidelines to Protect / Conserve / Enhance

- Conserve the traditional and historic character of the towns through appropriate and sympathetic maintenance of historic buildings.
- Ensure that future lighting is sympathetic and appropriate to its location and impact on the historic environment, biodiversity and character.
- Improve and extend recreational access into the countryside and coastal areas.



Ferry entry at Pembroke Dock



The Commons Pembroke



*Rocky Park development
Pembroke*

Adjacent Authority LCAs
PCNPA : LCAs– none Seascape Character Areas SCA32 Inner Milford Haven

LANDSCAPE CHARACTER AREA 17: MYNYDD PRESELI UPLANDS

Location :

This LCA is located directly to the south of the Pembrokeshire Coast National Park Preseli Hills.



Views across the area to the north towards the National Park



Wooded valley east of Henry's Moat



View south across the area into Llys-Y-Fran to the south

Summary Description :

This LCA generally comprises an upland agricultural landscape with scattered farmsteads. Mature trees are present within hedgerows and tree belts associated with small and narrow valleys and areas of scrub. A feeder stream into the Llys-y-Fran reservoir and onto the Cleddau River originates within the area. It contains the settlement of Henry's Moat and Maenclochog in part and lies north of the Llys-y-Fran reservoir.

Key Characteristics

- Underlying geology is dominated by Ordovician sedimentary slate which forms undulating hill terrain with glacial and periglacial deposits present especially in river flood plains. Current fluvial action has created incised river beds.
- The settlement pattern is formed by scattered small villages and hamlets, interspersed with farmsteads and relatively few isolated dwellings.
- Upland hill areas of scrub and woodland are interspersed with the more well-kept but not intensely managed enclosed agricultural areas characterised by small - medium regular and irregular enclosures with some relict medieval strip fields. Field boundaries are generally hedgebanks which are topped with hedges with occasional mature trees.
- Culturally forms part of a bilingual population of Welsh and English speaking communities where Welsh is more likely to be the first language, and Welsh place names are common.
- Farmsteads retain small scale closely nucleated groups of farm buildings.
- The areas bordering the Llys-y-Fran reservoir are in low key recreational use for community and tourism supported by a public right of way network into the reservoir.
- The historic landscape contains prehistoric standing stones, defence and enclosure sites and Medieval castle mound, motte defence and cross marked stone, and is absent of any listed buildings. Although Henry's Moat is Medieval in origin with Medieval church it is now represented by scattered development along with further scattered cottages and houses. Castlebythe Common, an areas of moor, bog and scrubby land has Medieval origins
- Habitat is largely improved grassland with limited amounts semi-improved grassland, marshy grassland, scrub, fen and arable fields.

Key Qualities

Borrowed views of the Preseli Hills to the north provide the backdrop to this area, and contribute strongly to the sense of place and enhance the sense of connection with the uplands. Tranquillity remains away from the B4329 which crosses the area and traverses the Preseli Hills to the north east. Areas of common, wooded valleys and scrub set in a mosaic of regular and irregular fields, including relic mediaeval strip fields hint at less intensive management and modernisation of agriculture, where traditional field boundaries of hedge / hedgebank largely remain alongside small scale agricultural buildings.

Landscape Change (LCA Specific)

Past and Present

- Retention of irregular and regular field pattern, hedgebanks and small nucleated farm holdings provides a sense of a low intensity of land management.
- Introduction of telecommunications masts.
- Introduction of the reservoir whilst outside the area, has influenced the management of adjacent land and introduction of recreational activity which extends into this area



View east into Maenclochog



Agricultural and other machinery stored at the roadside

Future

- Pressure for introduction of large scale renewable energy developments with resultant visual impact in exposed areas.
- Pressures for intensification of agricultural management and amalgamation of small fields, and introduction of drainage to wetter areas.



Farm buildings near Henry's Moat



Varied hedgebank management near Maenclochog

Key Sensitivities

- Loss of distinctive field patterns including relict strip fields.
- Naturalistic character of upland vegetation including commons, areas of rough grazing and marshy grassland.
- Open landscapes vulnerable to inappropriately sited large scale renewable energy developments.

Guidelines to Protect / Conserve / Enhance

- Maintain appropriate hedgerow management and boundaries.
- Resist introduction of conifer plantations within the area.
- Encourage appropriate recreational use of the land within the management of Welsh Water and increased access to the countryside beyond.
- Ensure renewable energy developments do not dominate exposed areas.



Tufton Village edge from the north



Hedge management and scrub



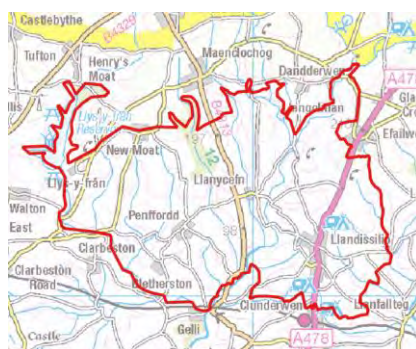
Hedgebank with mature trees

Adjacent Authority LCAs
PCNPA : LCA28 Daugleddau

LANDSCAPE CHARACTER AREA 18: EASTERN CLEDDAU VALLEYS

Location :

This area is located at the eastern edge of Pembrokeshire, adjacent to Carmarthenshire.



View south near New Moat



View south near Llanycelyn



View north over eastern Cleddau Ddu from Llwyn-dwfr bridge

Summary Description :

This LCA generally comprises an upland agricultural mosaic of fields with mature hedges and woodland belts associated with small narrow river valleys. It contains the villages of Llandissilio and New Moat, and small hamlets and isolated dwellings. Llys-y-fran reservoir and country park feeds into the Afon Syfynwy and along with the Eastern Cleddau flows south towards the Daugleddau to the south.

Key Characteristics

- Underlying geology is dominated by Ordovician slate across lowland hills with submerged bedrock including Ordovician. Where fluvial processes dominate superficial deposits of glacial sand and gravel and periglacial head are present in minor glacial meltwater channels.
- Agricultural landscape is a fine grained mosaic of upland agricultural fields with mature hedges and woodland belts, including sinuous conifer plantations, associated with small narrow river valleys which help to define the character and enclosed feel of the area.
- Settlements are limited, and include scattered farmsteads and hamlets, with varied use of materials, including some traditional stone buildings with render and some more modern agricultural buildings with metal sheeting which do not generally stand out in the landscape.
- Habitats attractive wooded river valleys are of considerable amenity as well as value to wildlife. Woodland cover is relatively dense and retains a mix of species. The agricultural landscape is dominated by improved grassland with limited amounts of arable land. At the reservoir, water and amenity grassland and broadleaf woodland and likely to be of importance for LBAP species.
- Road pattern comprises minor lanes for the most part and the area is crossed north south by the A478 as it passes through Llandissilio.
- Culturally the southern portion of the area falls within the wider generic 'Landsker' area traditionally dominated by English speaking communities. Further north, place names and communities are more bilingual. The foothills of the Preseli Hills are culturally associated with recreation, as is the Llys y Fran reservoir with its dam feature, and are culturally valued.
- The historic landscape is varied and includes prehistoric enclosures, motte and bailey, prehistoric fort and bailey churches and settlements of medieval origin (St Meilyr at Llys y Fran), although mainly 19th century in date.

Key Qualities

Borrowed views of the Preseli Hills add to a strong sense of place, as do views into the area from higher ground. Scattered farmsteads, mature wooded river corridors along valleys and in mature hedges and scrub within the wider agricultural landscape provide a naturalistic quality in an otherwise managed landscape. Within valleys there is a sheltered tranquil feel and enclosure created by broadleaf woodland. The sense of place is defined by the river corridors of the Easter Cleddau and Afon Syfynwy set within the wider agricultural landscape which is enhanced by mature trees along rivers and in hedgerows. Whilst the reservoir has a rarity within Pembrokeshire, its recreational value is understated and is not intensely managed retaining a tranquil character and upland feel in views to the east.

Landscape Change (LCA Specific)

Past and Present

- The introduction of conifer plantations has introduced added visual interest, although resulted in an overall visual deterioration of the landscape.
- Former quarry areas provide locally detracting views.
- Enclosed agricultural areas have not been intensively managed and retain an upland feel.
- Woodland appears appropriately managed including coniferous areas as productive forestry.
- Building materials include traditional stone rendered cottages. Modern additions are generally constructed in sympathy with these using brick or blockwork with render. Less attractive agricultural

buildings including large barns with metal sheet coverings are present although generally in nucleated farm holdings.

- Introduction of the Llys-y-Fran reservoir and dam and resultant flooded valley.
- Caravan parks are evident at settlement edges



Western entrance to New Moat



Marshy grassland

Future

- Increasing pressure for recreational and commercial development at Llys y Fran.
- Conifer plantation management, harvesting and replanting could impact on the character of the landscape.
- Pressures for intensification of agriculture and resultant impact on field patterns, and additional agricultural buildings introduced.
- Pressure for renewable energy developments in exposed areas.



View north near Pen-ffordd



Wooded valley bottom

Key Sensitivities

- Potential impacts and overall upland and low management character.
- Settlement pattern including scattered farmsteads and isolated dwellings.

- Introduction of inappropriate scale of renewable energy developments.
- Intensification of caravan park developments

Guidelines to Protect / Conserve / Enhance

- Manage for ecological value, well managed recreational access, including the reservoir as a recreational resource with particular amenity value.
- Preserve upland and naturalistic character .
- Allow natural regeneration of disused / dormant quarries as this becomes possible
- Ensure ongoing management of woodlands and hedgerows to retain their presence within the landscape



Farm building with mixed materials



Llandissilio village



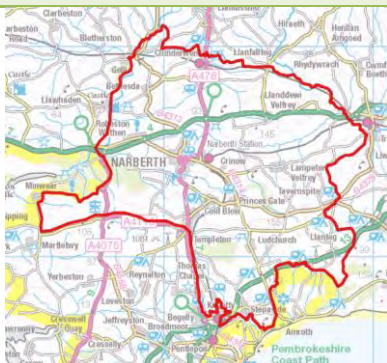
Caravan park

Adjacent Authority LCAs
PCNPA : none Carmarthenshire : none

LANDSCAPE CHARACTER AREA 19: NARBERTH AND LAMPETER VALE

Location :

This area is located at the east of Pembrokeshire and borders the National Park to the south and west and Carmarthenshire to the east.



View west near Bethesda



View south from the A40 west of Penblewin



Sea views to the south from near Ludchurch

Summary Description :

This area comprises the rural town of Narberth, surrounded by undulating agricultural landscape. Significant travel routes cross the area including the A40(T), the A478 and railway line. Significant tourism development includes Oakwood theme park, and part of Bluestone holiday village, and part of Folly Farm adventure park and zoo. Quiet rural villages and smaller settlements are dispersed throughout the area. Conifer plantation and narrow wooded stream valleys encroach at the south.

Key Characteristics

- Geology is dominated by a series of gentle ridges running east west formed from Ordovician and Silurian slates and Old Red Sandstone. Mature river systems, originating in higher ground south of

the Preseli Hills feed into a broad flood plains with drift filled floors. Areas of glacial and periglacial deposits including sand and gravel within gentle slopes.

- Habitats are largely improved grassland with limited areas of arable, semi-natural broadleaved woodland and planted coniferous woodland. In places, particularly towards the Cleddau at Minwear, west of Ludchurch and along narrow river valley bottoms, woodland dominates. Species rich hedgebanks at lanes and woodland associated with small streams provide varied habitat.
- Settlement pattern is largely centred around the rural town of Narberth and its extensive rural hinterland, scattered farms, hamlets and isolated dwellings throughout the area. Large scale tourism developments and tourism accommodation also influence and are generally set within a lowland farm landscape.
- Whilst this area is largely made up of the rich farmland and English speaking communities, Narberth historic market town acts as a focal point within the wider agricultural landscape and culturally provides a bustling tourism destination and strong active local community. Parts of Bluestone holiday resort, Folly Farm and Oakwood lie within the area, and at the southern area is culturally influenced by the former mining and industrial area around Kilgetty. Both the main road network and railway systems traverse the area and are locally influential.
- This area contains a rich and diverse historic landscape spanning pre-historic to modern eras and a wealth of recorded archaeology, from all periods, including prehistoric funerary and ritual monuments, iron age forts, medieval castles and churches, post-medieval bridges and buildings and disused quarries. Relict medieval strip fields are evident within the area including Cold Blow and Templeton and Tavernspite. All farm types and housing types are represented. Listed buildings include medieval churches, 19th century chapels, and milestones alongside the turnpike road.

Key Qualities

Quiet rural villages can have an attractive and sheltered feel with low levels of human settlement, mixed farmland with species rich hedgebanks along minor lanes and areas of woodland in association with small streams set in a lowland farm landscape, provide a strong sense of place and rural tranquillity. Elsewhere, however, this sense is reduced by the noise and visual influences of main roads and railway line which create unattractive views. Traffic volumes travelling through the area or visiting its tourist attractions, introduce noise and disturbance. Large pylons to the south of the area provide significant detractors and to a lesser extent to caravan parks and views out onto turbines. Oakwood Leisure Park, Bluestone Village and Folly Farm are partly located within the area and impinge on the rural character and create light pollution but are culturally significant and include nationally recognised tourist attractions. The market town of Narberth sits on locally higher ground and creates a strong sense of place within the wider rural hinterland.

Sea views from higher land to the south and greater numbers of caravan and camping sites, some of which are prominent within the landscape, provide a connection to the coast.

Landscape Change

Past and Present

- Introduced conifer plantations to the north of the area
- Caravan parks have been developed to the south of the area in particular
- Sand and limestone quarries within the area have limited impact beyond local areas.

- Tourist attractions have continued to evolve and grow and provide nationally recognised attractions.
- Large scale pylons traverse the south of the area.
- Large scale turbines within the area, and views onto large scale turbines outside of the area.



A40 near Penblewin



Road cutting along the A477 near Longstone

Future

- Impacts on the agricultural mosaic from intensification of agricultural practices and pressures for expansions to settlements
- Potential for further development of pylons to enhance connections to the national grid.
- Further renewable energy development at higher ground
- Pressure for expansion and intensification / diversification of tourist attractions and accommodation for tourists, including caravan parks, lodges, tent and chalets.



Pylons traversing the south of the area



Narberth town

Key Sensitivities

- Potential for erosion of rural tranquillity and character away from main existing visual and noise detractors

- Intensification of impact from tourist accommodation, facilities and attractions and impact on character

Guidelines to Protect / Conserve / Enhance

- Screen railway and main road where opportunities arise.
- Harvested conifer plantations should be restored to native species rich woodland where possible.
- Resist development that does not reflect the rural character of this area, and its vernacular architecture and traditional materials
- Resist inappropriately sited tourist accommodation including static and touring caravans and lodges and maintain opportunities for the conversion of redundant farm buildings.
- Resist further insensitive development of pylon and large scale turbines.



Turbine near Princes Gate



Caravan park entrance



Clunderwen railway station

Adjacent Authority LCAs
PCNPA : LCA28 Daugleddau; LCA1 Saundersfoot settled coast